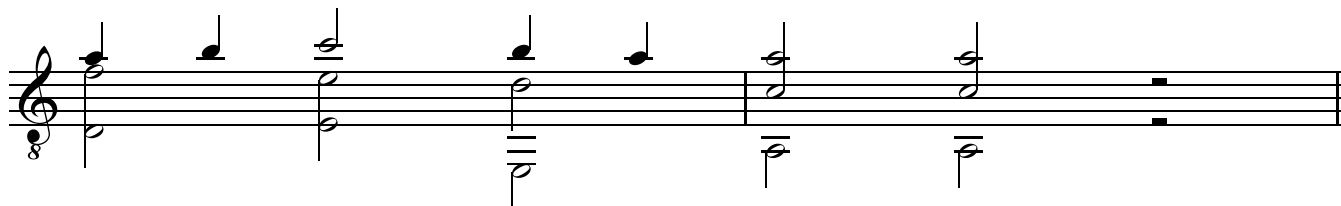
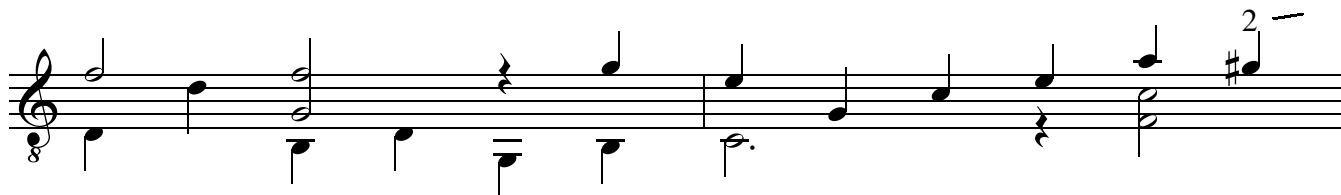
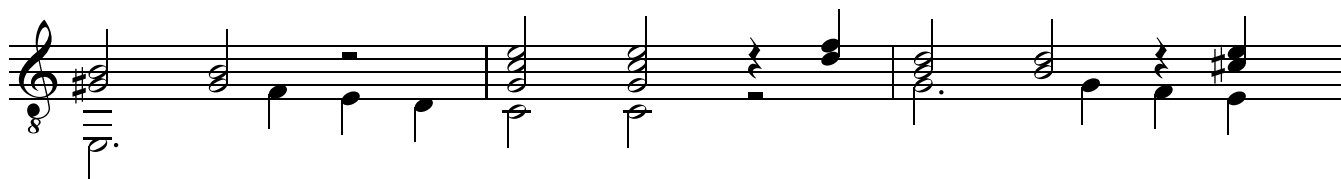
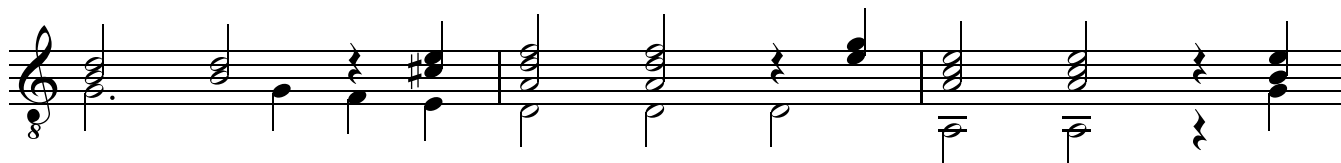


# Sarabande

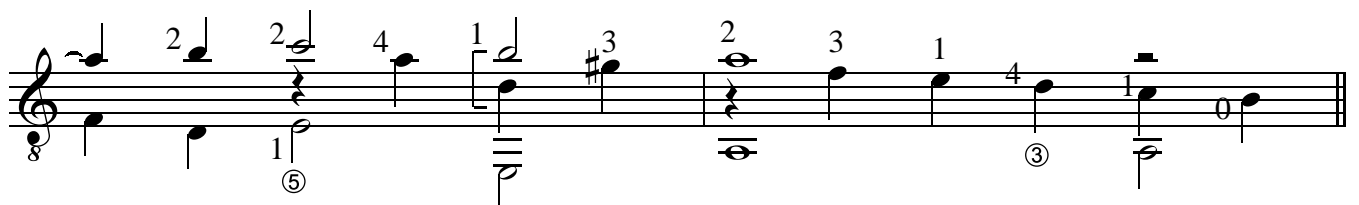
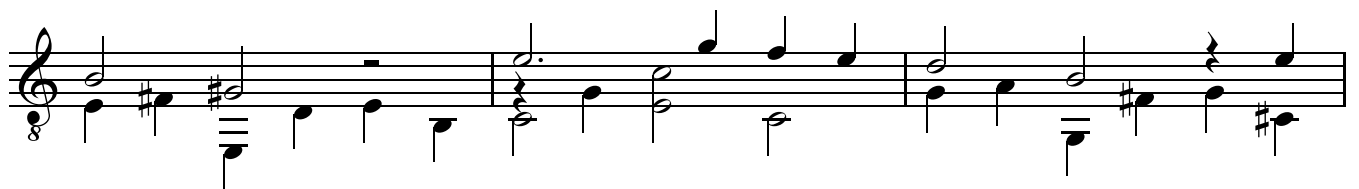
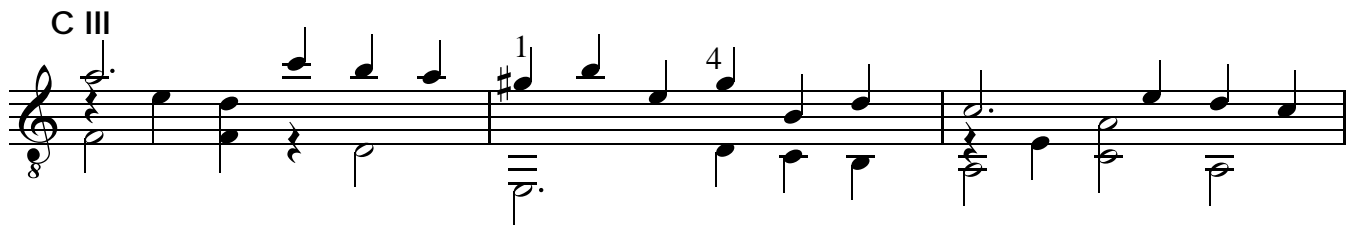
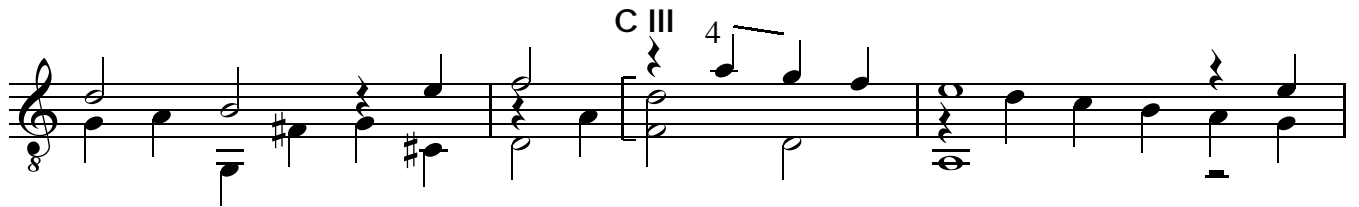
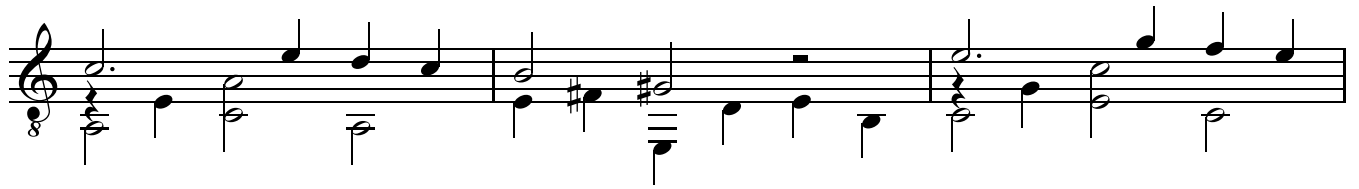
La Folia

George Friedrich Handel  
arr. JNM van den Langenberg

Andante



## variation 1



variation 2

First musical staff of the variation, featuring a treble clef, a key signature of one sharp (F#), and a common time signature. The staff contains a sequence of chords and single notes, including a prominent F# in the bass line.

Second musical staff, continuing the melodic and harmonic progression. It includes a triplet of eighth notes in the bass line, marked with a '3'.

Third musical staff, featuring a bracketed section with a circled '2' above it. This section includes a double bar line and a sharp sign (#) above a note. Fingering numbers 2, 1, 0, 1, 4, and 0 are indicated below the notes. The text 'C VII' is written above the staff.

Fourth musical staff, showing further chordal development and melodic movement.

Fifth musical staff, continuing the piece with various chordal textures.

Sixth musical staff, concluding the variation. It features a double bar line and the text 'C V' above the staff. The word 'ritenuto' is written below the staff.